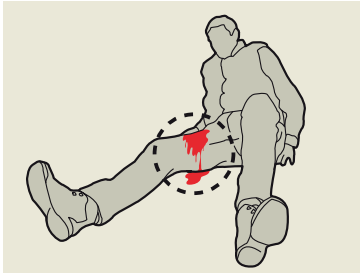


CELOX™ RAPID

How to Use/Recommendations for Removal



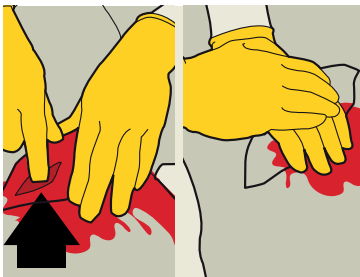
1 Identify massive hemorrhage



2 Gain control of the bleeding



3 Expose the wound - cut or tear the clothing covering the wound



4 Identify the point of bleeding and apply direct pressure



5 Swab excess blood



6a Pour onto source of bleeding - it has tear four notches, one at each corner



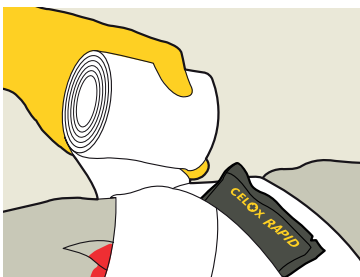
6b Pour onto source of bleeding - open pack, take one end of gauze while still applying pressure



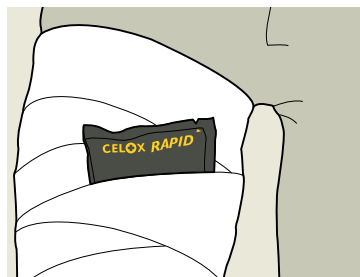
6c Pour onto source of bleeding - tightly pack the unfolding Celox Rapid directly to the source of bleeding, feeding in the Celox Rapid until the wound is filled above skin level. Excess gauze can be cut or torn



7 Apply firm pressure for 60 seconds or until bleeding stops



8 Secure with a dressing to maintain pressure and discard any remaining Celox Rapid



9 Transfer the casualty to the next stage of care

THINK ABOUT MASSIVE HEMORRHAGE

- M** = Massive Hemorrhage
- A** = Airway
- R** = Respiration
- C** = Circulation
- H** = Head & Hypothermia

Warnings: Device is not intended for surgical use. Do not use in abdominal wounds and wounds not amenable to pressure. Loss of sterility potentially poses a risk of infection. Do not apply over eyes. If eye irritation occurs flush with water for 5 minutes. Contains chitosan from shellfish. Allergy studies show no adverse reaction to date. Data on file at Medtrade Products Ltd.

PRODUCT EVALUATION FORM

Evaluation forms can be emailed to info@omni-stat.com or given to your local sales representative

Facility/Hospital Name: _____ Date: _____

Provider Name: _____ Provider Signature: _____

Product Preparation Used

- | | | |
|--|--|--|
| <input type="checkbox"/> OMNI-STAT Granules (3g) | <input type="checkbox"/> CELOX™ Z Fold Gauze (5ft) | <input type="checkbox"/> CELOX™ Granules (15g) |
| <input type="checkbox"/> OMNI-STAT Gauze (4in x 4in) | <input type="checkbox"/> CELOX™-A (6g) | <input type="checkbox"/> CELOX™ RAPID |

Type of Wound

- Gunshot
- Laceration/Abrasion
- Puncture
- Blunt Trauma
- Skin Tear
- Diabetic Foot Ulcer
- Pressure Ulcer
- Other: _____

Hold Pressure Time

- 1 minute
- 3 minutes
- 5 minutes
- 10 minutes
- Other: _____

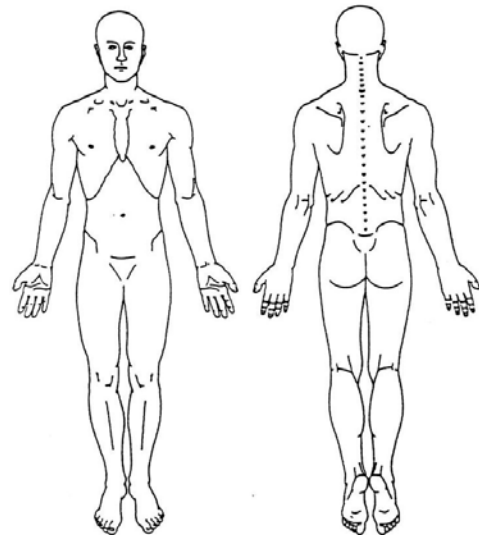
Was the Patient Anticoagulated?

- YES,
If Yes, please list type
of anticoagulant: _____
- NO

Was hemostasis achieved?

- YES
- NO

Wound Location



Please circle the location of the wound on the diagram above

Observations/Results
